



ChannelFlex Ultra F Series

SYSTEM TYPE: ANCHORED RESILIENT



Factory Fabricated Subfloor System featuring steel stabilizing Z-channels retained by polymer retention blocks for exceptional performance and stability.

Action 1/2" (12 mm) continuous closed cell foam performance ribbon pad system. (Open cell optional)

MFMA Northern Hard Maple by Action:	Random Length (RL) Action Long Length (FJ) Action Expansion Ridge Technology (ER)
Testing Agency:	Certified by ISSS
Performance Meets or Exceeds:	MFMA PUR EN 14904 Type 4 DIN 18032 Part 2 (2001) ASTM F2772 FIBA Level 1
Slab Depression:	25/32" (20 mm): 2-1/8" (54 mm) 33/32" (27 mm): 2-1/4" (57 mm)
LEED:	FloorScore®-certified Proprietary certified EPD® FSC®-certified Maple and Subfloor available MR credits – based on products, selected materials and facility locations

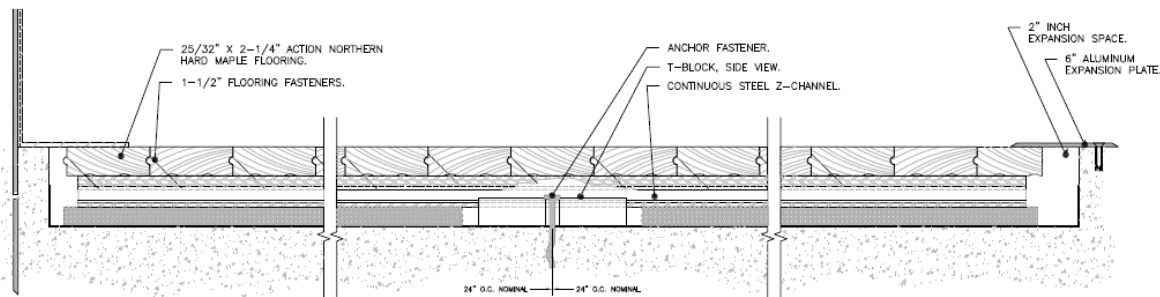


Performance and System Stability:	Anchored resilient design for stability <ul style="list-style-type: none"> • Excellent athletic playability • Excellent shock absorption • Factory fabricated subfloor for superior consistency • SCORES* compliant
--	---

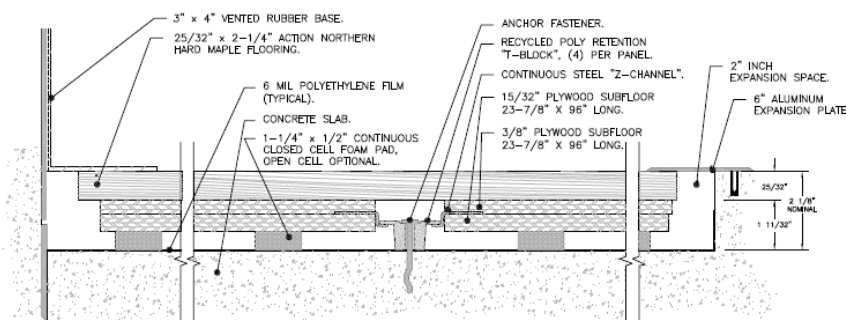
* Sustainable Construction Of Renewable Engineered Surfaces. Action has been certified as a Carbon Negative provider following a Life Cycle Assessment conducted by the University of Wisconsin and Carbon Clear, an international independent auditor of manufacturing carbon profiles.



- Factory fabricated subfloors provide a superior level of uniformity.
- Engineered to deliver outstanding playability and performance while minimizing unwanted vibration/energy transfer to the athlete.
- The manufacturer and flooring shall be independently verified by the guidelines of the ISO 14040-2006 and ISO 14044: #2006 Life Cycle Assessment (LSA) confirming a negative carbon footprint.
- Carbon Evaluation must be inclusive and based on all corporate facilities, offices and mills.
- The manufacturer and flooring shall be independently verified by the guidelines of the ISO 14064-1:2006 World Resource Institutes Greenhouse Gas Protocol, Scope 1, 2 and 3.
- The manufacturer and flooring shall be registered in the Collaborative for High Performance Schools (CHPS) Product Database.
- Floor system manufacturer must provide a Life Cycle Assessment and an Environmental Product Declaration (EPD)® in accordance with the Product Category Rule Version 2.2014.
- Floor system manufacturer must be FloorScore® Certified in accordance with CDPH 01350.



Action_ChannelFlex_UltraF
Section across room width



Complete product specifications and system drawings are available online at: www.actionfloors.com



ACTION FLOOR SYSTEMS, LLC
4781 N. US Hwy 51 • Mercer, WI 54547
TOLL FREE: 800-746-3512 • VOICE: 715-476-3512
FAX: 715-476-3585 • EMAIL: info@actionfloors.com
actionfloors.com

Rev. 12/17