



# GreenFlex™ F1 Floor System

SYSTEM TYPE: ANCHORED RESILIENT



*Fabricated subfloor system retained with polymer retention blocks utilizing recycled granular rubber fulcrum*

*Action 3/8" (10 mm) continuous performance ribbon pad system*

**MFMA Northern Hard Maple by Action:**

Random Length (RL)  
Action Long Length (FJ)  
Expansion Ridge Technology (ERT)

**Testing Agency:**

Certified by ISSS

**Performance Meets or Exceeds:**

EN 14904 Type 4  
DIN 18032 Part 2 (2001)  
ASTM F2772  
FIBA Level 1

**Slab Depression:**

25/32" (20 mm): 2" (50 mm)  
33/32" (27 mm): 2-1/4" (57 mm)

**LEED:**



FloorScore®-certified  
Proprietary certified EPD®  
FSC®-certified Maple and Subfloor available  
MR credits – based on products, selected materials and facility locations

**Performance and System Stability:**

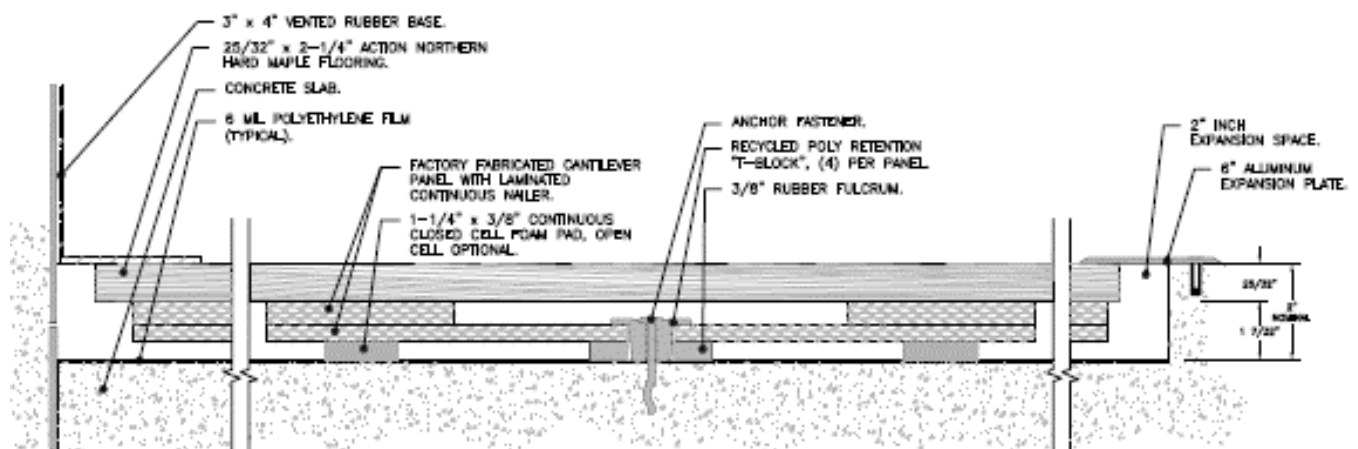
- Fixed resilient design for stability
- Excellent athletic playability
- Excellent shock absorption
- Factory fabricated subfloor for superior consistency
- SCORES\* compliant

\* Sustainable Construction Of Renewable Engineered Surfaces. Action has been certified as a Carbon Negative provider following a Life Cycle Assessment conducted by the University of Wisconsin and Carbon Clear, an international independent auditor of manufacturing carbon profiles.



ISO 14000 2004 VERIFIED

- Environmentally smart system engineered to focus materials where needed for playability and performance.
- Factory fabricated subfloors provide a superior level of uniformity.
- The manufacturer and flooring shall be independently verified by the guidelines of the ISO 14040-2006 and ISO 14044: #2006 Life Cycle Assessment (LSA) confirming a negative carbon footprint.
- Carbon Evaluation must be inclusive and based on all corporate facilities, offices and mills.
- The manufacturer and flooring shall be independently verified by the guidelines of the ISO 14064-1:2006 World Resource Institutes Greenhouse Gas Protocol, Scope 1, 2 and 3.
- The manufacturer and flooring shall be registered in the Collaborative for High Performance Schools (CHPS) Product Database.
- Floor system manufacturer must provide a Life Cycle Assessment and an Environmental Product Declaration (EPD®) in accordance with the Product Category Rule Version 2.2014.
- Floor system manufacturer must be FloorScore® Certified in accordance with CDPH 01350.



Complete product specifications and system drawings are available online at: [www.actionfloors.com](http://www.actionfloors.com)



ACTION FLOOR SYSTEMS, LLC  
4781 N. US Hwy 51 • Mercer, WI 54547

TOLL FREE: 800-746-3512 • VOICE: 715-476-3512  
FAX: 715-476-3585 • EMAIL: [info@actionfloors.com](mailto:info@actionfloors.com)

[actionfloors.com](http://actionfloors.com)

Rev 12/17