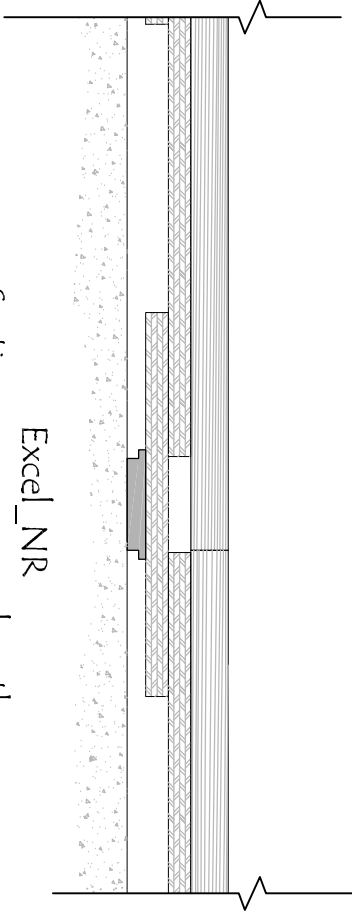
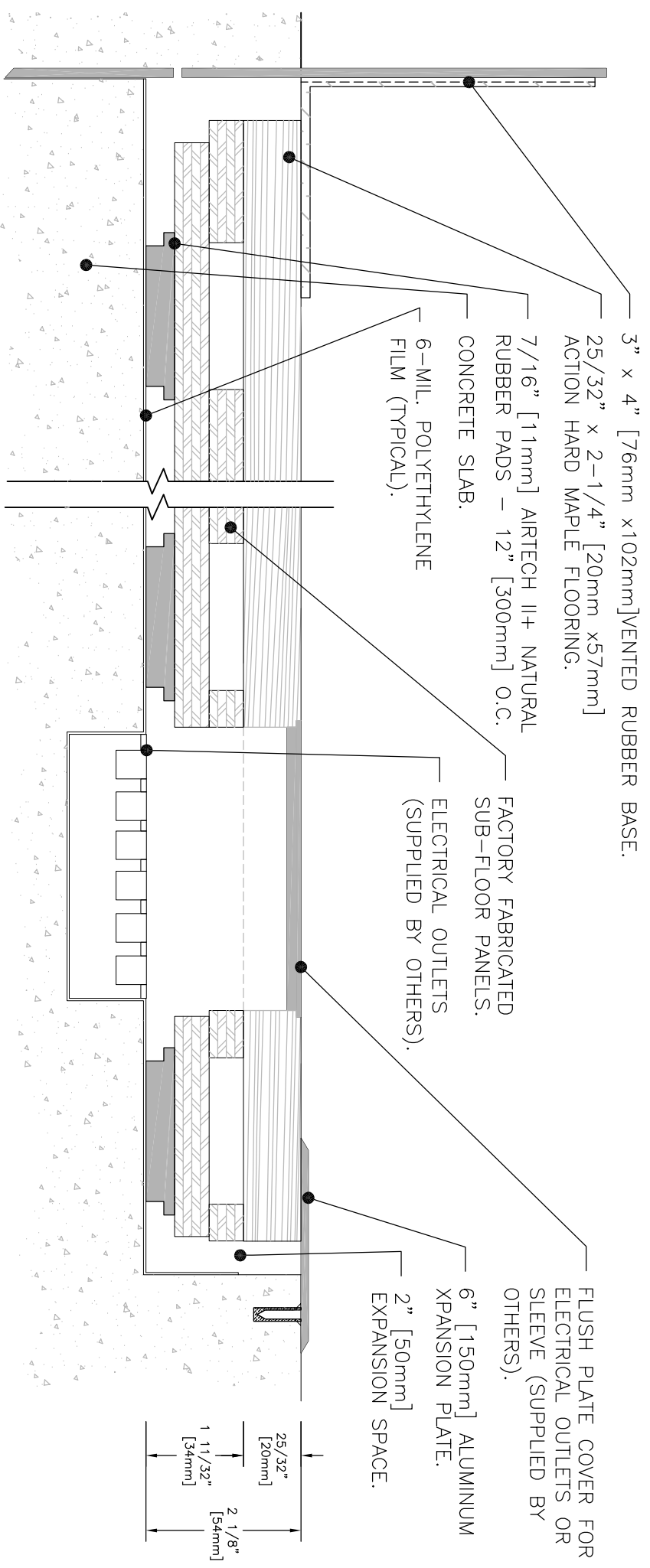


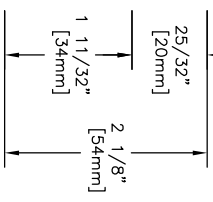
Excel_NR
Section across room width



Excel_NR
Section across room length



- 3" x 4" [76mm x 102mm] VENTED RUBBER BASE.
- 25/32" x 2-1/4" [20mm x 57mm] ACTION HARD MAPLE FLOORING.
- 7/16" [11mm] AIRTECH II+ NATURAL RUBBER PADS - 12" [300mm] O.C.
- CONCRETE SLAB.
- 6-MIL. POLYETHYLENE FILM (TYPICAL).
- FACTORY FABRICATED SUB-FLOOR PANELS.
- ELECTRICAL OUTLETS (SUPPLIED BY OTHERS).
- FLUSH PLATE COVER FOR ELECTRICAL OUTLETS OR SLEEVE (SUPPLIED BY OTHERS).
- 6" [150mm] ALUMINUM EXPANSION PLATE.
- 2" [50mm] EXPANSION SPACE.



Excel_NR