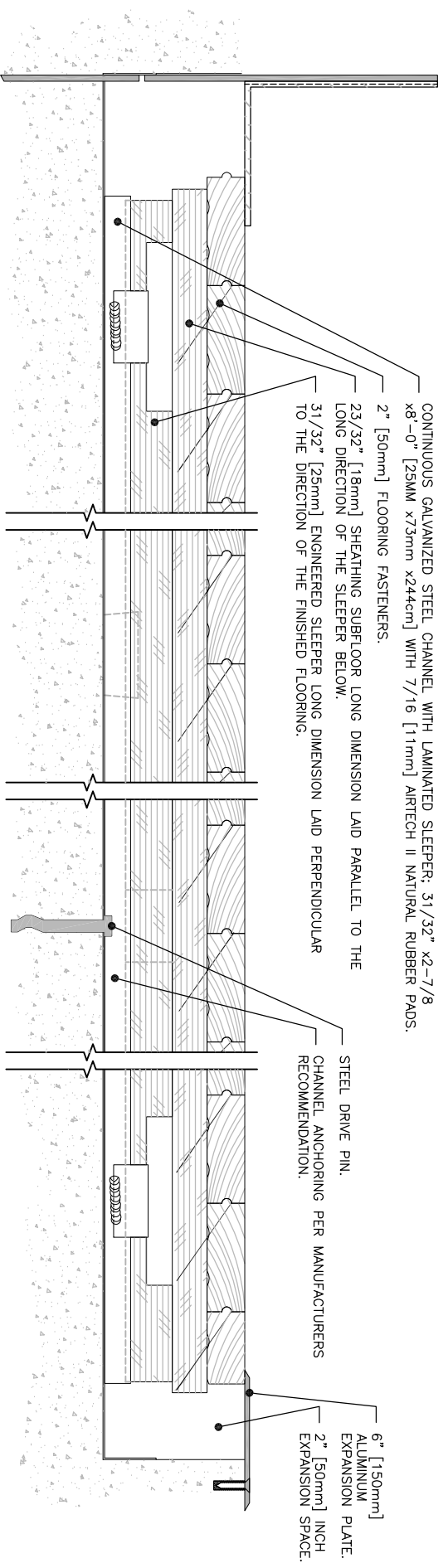


Action_PowerChannel
Section across room length



Action_PowerChannel
Section across room width

CONTINUOUS GALVANIZED STEEL CHANNEL WITH LAMINATED SLEEPER: 31/32" x2-7/8 x8--0" [25MM x73mm x244cm] WITH 7/16 [11mm] AIRTECH II NATURAL RUBBER PADS.
2" [50mm] FLOORING FASTENERS.
23/32" [18mm] SHEATHING SUBFLOOR LONG DIMENSION LAID PARALLEL TO THE LONG DIRECTION OF THE SLEEPER BELOW.
31/32" [25mm] ENGINEERED SLEEPER LONG DIMENSION LAID PERPENDICULAR TO THE DIRECTION OF THE FINISHED FLOORING.

STEEL DRIVE PIN.
CHANNEL ANCHORING PER MANUFACTURERS RECOMMENDATION.

6" [150mm] ALUMINUM EXPANSION PLATE.
2" [50mm] INCH EXPANSION SPACE.

23/32" [18mm] PLYWOOD SUBFLOOR LAID PARALLEL WITH THE POWERCHANNEL SYSTEM.
31/32" [25mm] ENGINEERED SLEEPER LAID PERPENDICULAR TO THE DIRECTION OF THE FINISHED FLOOR SYSTEM.
END VIEW OF STEEL POWER CHANNEL ANCHOR SYSTEM. CHANNEL/SLEEPER ASSEMBLY SPACED 16" O.C. [40.5cm]. AIRTECH PAD BEYOND SECTION PLANE.

