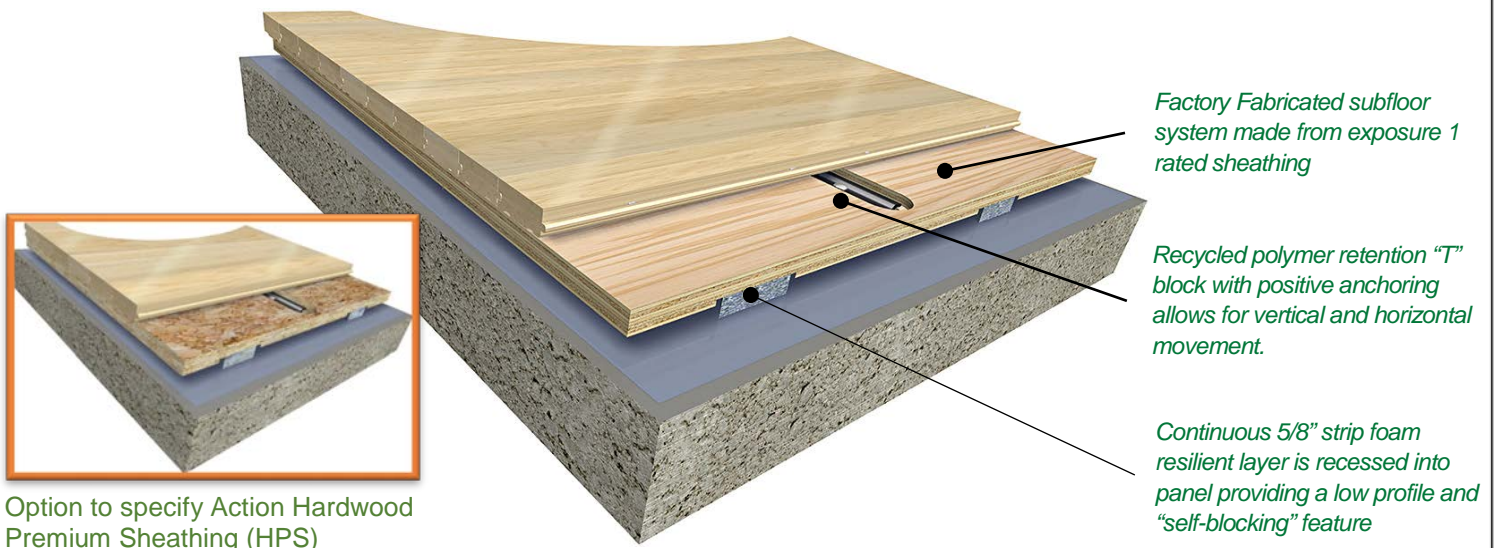




AnchorFlex

SYSTEM TYPE: ANCHORED RESILIENT



Option to specify Action Hardwood Premium Sheathing (HPS)

MFMA NORTHERN HARD MAPLE BY ACTION:

Random Length (RL)
Action Long Length (FJ)
Expansion Ridge Technology (ERT)

TESTING AGENCY:

Certified by ISSS

PERFORMANCE MEETS OR EXCEEDS:

MFMA PUR
DIN 18032 Part 2 (1991 & 2001)
EN 14904 Type 4 Certified
ASTM F2772
FIBA Certified

SLAB DEPRESSION:

25/32" (20 mm): 1-7/8" Nominal (48 mm)
33/32" (27 mm): 2-1/8" Nominal (54 mm)

LEED:



FloorScore®-certified
Proprietary certified EPD®
FSC®-certified Maple and Subfloor available
MR credits – based on products, selected materials and facility locations

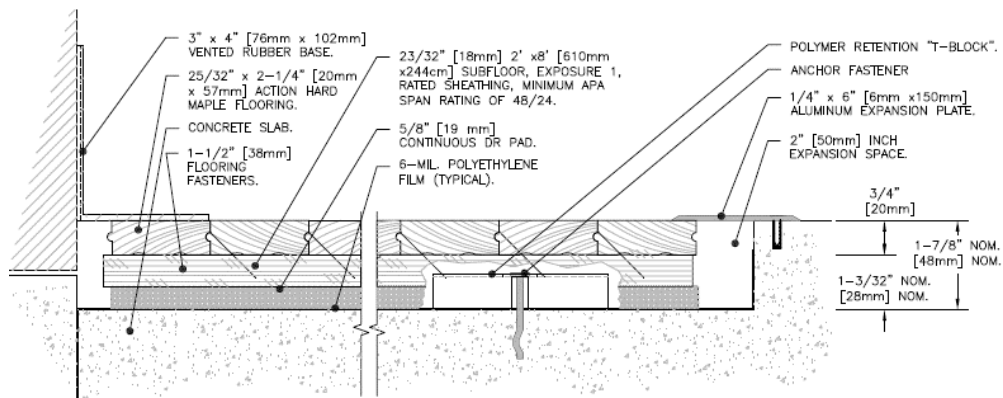
PERFORMANCE AND SYSTEM STABILITY:

Factory fabricated subfloor system

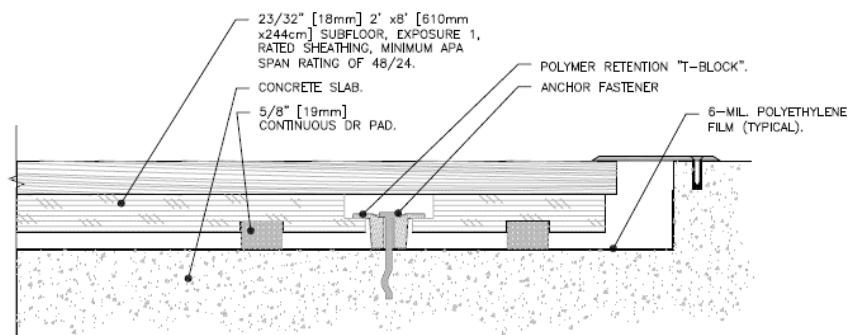
- Superior stability and strength
- System design provides solid blocking characteristic
- Anchored system confirms uniform performance



- Action AnchorFlex Floor system is PUR, DIN 18032 Part 2 and EN Certified providing great ball response and uniform playability to maximize the athletes comfort and performance.
- Factory fabricated subfloor system and resilient layer with solid blocking feature provides strength and stability.
- The manufacturer and flooring shall be independently verified by the guidelines of the ISO 14040:2006 and ISO 14044:2006 Life Cycle Assessment (LSA) confirming a negative carbon footprint.
- Carbon Evaluation must be inclusive and based on all corporate facilities, offices and mills.
- The manufacturer and flooring shall be independently verified by the guidelines of the ISO 14040-2006 World Resources Institute Greenhouse Gas Protocol, Scope 1, 2 and 3.
- The manufacturer and flooring shall be registered in the Collaborative for High Performance Schools (CHPS) Product Database.
- Floor system manufacturer must provide a Life Cycle Assessment and an Environmental Product Declaration (EPD®) in accordance with the Product Category Rule Version 2.2014.
- Floor system manufacturer must be FloorScore® Certified in accordance with CDPH 01350.



AnchorFlex



Complete product specifications and system drawings are available online at: www.actionfloors.com



ACTION FLOOR SYSTEMS, LLC
 4781 N. US Hwy 51 • Mercer, WI 54547
 TOLL FREE: 800-746-3512 • VOICE: 715-476-3512
 FAX: 715-476-3585 • EMAIL: info@actionfloors.com
actionfloors.com