



Anchor Flex LP

SYSTEM TYPE: ANCHORED RESILIENT



MFMA NORTHERN HARD MAPLE BY ACTION:

Random Length (RL)
Action Long Length (FJ)
Expansion Ridge Technology (ERT)

TESTING AGENCY:

Certified by ISSS

PERFORMANCE MEETS OR EXCEEDS:

FIBA Certified

SLAB DEPRESSION:

25/32" (20 mm): 1-3/4" Nominal (45 mm)
33/32" (27 mm): 2" Nominal (51 mm)

LEED:

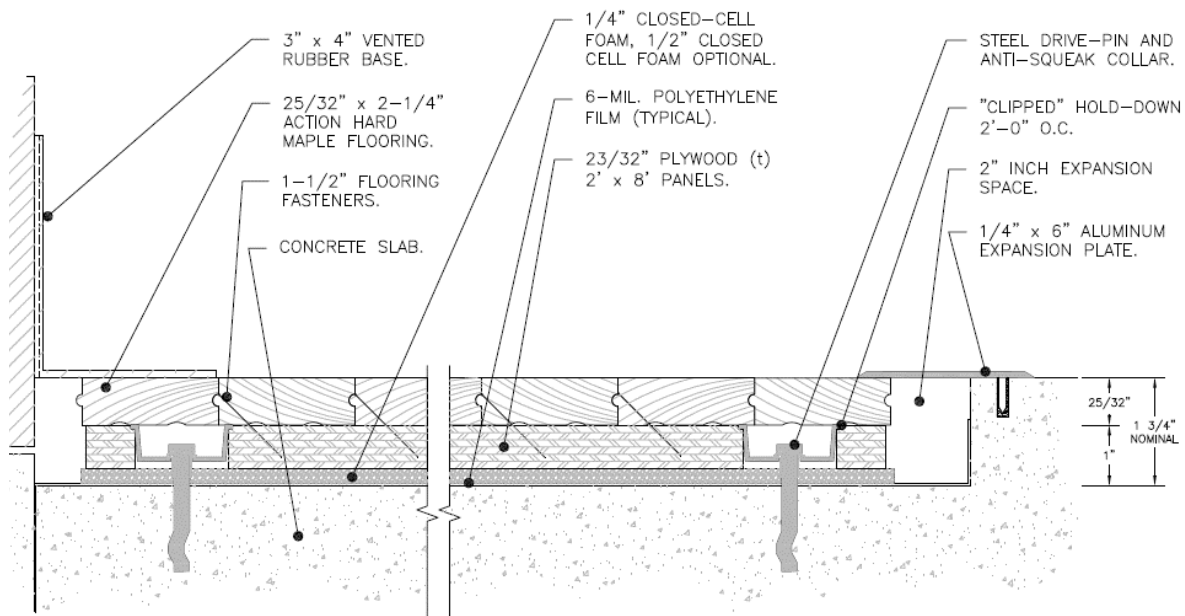


FloorScore®-certified
Proprietary certified EPD®
FSC®-certified Maple and Subfloor available
MR credits – based on products, selected materials and facility locations

PERFORMANCE AND SYSTEM STABILITY:

- Factory fabricated subfloor system
- Superior stability and strength
- System design is perfect for low profile installations
- Anchored system confirms uniform performance

- Action Anchor Flex LP Floor system provides for great ball response and uniform playability to maximize the athletes comfort and performance.
- Factory fabricated subfloor system and resilient layer provides for low profile and great playability.
- The manufacturer and flooring shall be independently verified by the guidelines of the ISO 14040:2006 and ISO 14044:2006 Life Cycle Assessment (LSA) confirming a negative carbon footprint.
- Carbon Evaluation must be inclusive and based on all corporate facilities, offices and mills.
- The manufacturer and flooring shall be independently verified by the guidelines of the ISO 14040-2006 World Resources Institute Greenhouse Gas Protocol, Scope 1, 2 and 3.
- The manufacturer and flooring shall be registered in the Collaborative for High Performance Schools (CHPS) Product Database.
- Floor system manufacturer must provide a Life Cycle Assessment and an Environmental Product Declaration (EPD®) in accordance with the Product Category Rule Version 2.2014.
- Floor system manufacturer must be FloorScore® Certified in accordance with CDPH 01350.



Complete product specifications and system drawings are available online at: www.actionfloors.com



ACTION FLOOR SYSTEMS, LLC
 4781 N. US Hwy 51 • Mercer, WI 54547
 TOLL FREE: 800-746-3512 • VOICE: 715-476-3512
 FAX: 715-476-3585 • EMAIL: info@actionfloors.com
actionfloors.com