

PROJECT PROFILE

INSTALLING SAFE, DURABLE PICKLEBALL COURTS FOR RALLY PICKLEBALL



An Action Floors Synthetic Court is Improving Play for North Carolina Pickleballers

Pickleball is booming across the United States, with sources reporting that 14% of American adults played pickleball at least once in 2022. But for many players and fans, pickleball is more than a hobby or a workout. It's a can't-miss social event, and one that is an essential part of an outgoing, active lifestyle.

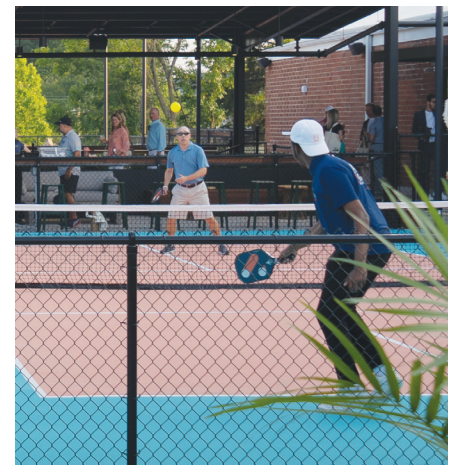
Enter Rally Pickleball, a North Carolina-based pickleball-meets-social club that's on the forefront of a new kind of pickling lifestyle. Rally's stylish facility includes a café, fine dining options, courtside bar, VIP lounge, fire pit, and indoor and outdoor pickleball courts.

These aren't your average pickleball courts, either. That's because we stepped in to play as the manufacturer and installer of eight top-performing synthetic sports surfaces at their space in Charlotte. We are proud to have Action Herculon PB Pro named The Official Surface of Rally Charlotte Pickleball Courts. Our pickleball flooring system makes a radical difference for players of all ages and skill levels. Read on to discover how.

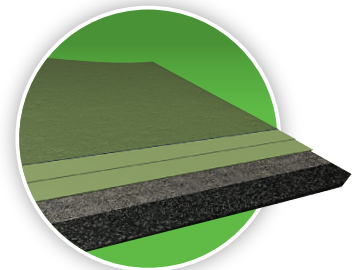
The Serve: Connecting with Rally Pickleball

After reading about Rally, Action Floors President Tom Abendroth reached out directly to express his excitement about the project and how Action Floors could help. Luckily for both parties, co-founder and pro pickleballer, Megan Charity, had already played on Action's pickleball surfaces. She remembered her experience as being remarkable for her quality of play.

Rally needed a partner who could work closely with a general contractor, and one that carefully adhered to their timeline. Action Floors proved to be up to the task, and we brought our experience, skill, and top-notch surfacing materials to Charlotte to begin an exciting installation.



Action Herculon PB Pro outdoor pickleball courts and courtside bar



Action Herculon PB Pro

PROJECT PROFILE: INSTALLING SAFE, DURABLE PICKLEBALL COURTS FOR RALLY PICKLEBALL



In Play: Installation and Overcoming Challenges

As the team kicked off the installation of eight courts, four indoor and four outdoor, a couple of speed bumps emerged, including working with an existing asphalt surface (a less than optimal starting point). This is to be expected with any project, but the takeaways are that Action and Rally's teams collaborated effectively to overcome these challenges.

The Stats: Details About Rally's Pickleball Courts

- The eight Action Herculon PB Pro courts totaled 15,000 square feet, with a 7+2 profile.
- They were installed in four custom colors. When we say they were custom colors, we really mean that—the palette was carefully matched to specifications provided by Rally's designer.
- A rubber mat was installed first, followed by a layer of polyurethane. Lastly, a final coating (with color added) was poured. This system type is also called "pad and pour."
- The top layer added was our Standard "Court S" polyurethane, a water-based coating with fine silica sand that makes the surface non-slip.

The Win: A Game-Changing, Injury-Preventing Pickleball Surface

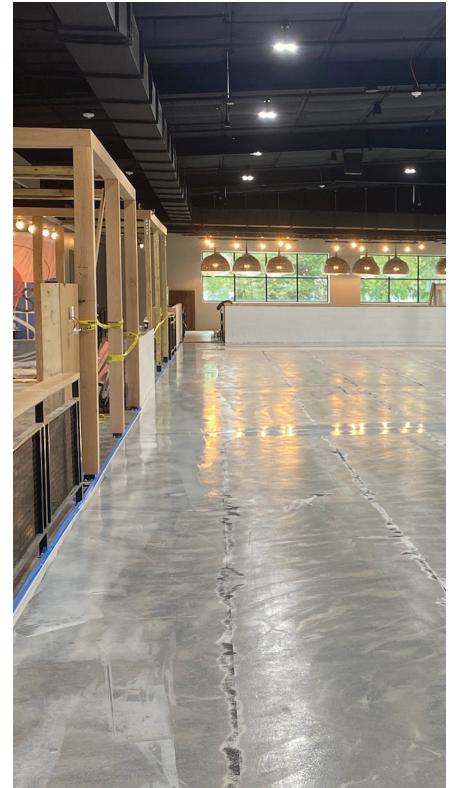
With an inferior pickleball surface, players are subject to muscle damage, forceful impact on joints, and the danger of slips and falls. Action Herculon PB Pro is designed to provide comfort, uniform play, and most important of all, unparalleled safety. Here's why more pickleball lovers and pros alike choose Action courts:

- **Comfort:** Provides up to 35% shock absorption
- **Uniform play:** Soft but rebounds; uniform support and ample ball bounce
- **Safety:** Cushioned, highly shock-absorbent, and non-slip
- **Eco-friendly:** Base of the court is recycled
- **Easy to clean:** Only cleaning required is a weekly vacuum and wash, then a monthly scrubbing
- **Durable:** Designed to be weather and water-resistant; stands up to harsh UV rays

Provide Years of Safe, Enjoyable Play for Pickleballers

Rally's Action Herculon PB Pro synthetic pickleball courts will require minimal maintenance over the next decade or more. These surfaces are made to last and will continue performing, providing maximum ROI.

Looking for the perfect surfaces for your next flooring or sports surface project? Chat with an expert at Action Floor Systems to learn more about creative flooring system solutions.



Pad and pour installation



View other Case Studies and Project Profiles on our website to discover how our sports floor systems can be used for a variety of end uses.